



Firmware Upgrade Manual for FW Version 1.12 [03-09-2018]

Project Number: HE 100925

Product Description: NCC-1222

This document contains information about how to upgrade the NCC-1222 to
FW Version 1.12 with Web interface Version 1.12 support

Technetix Ltd

Communications House, Edward Way, Burgess Hill, West Sussex RH15 9TZ, UK

Kazemat 5, NL-3905 NR, PO Box 385, NL-3900 AJ, Veenendaal, Netherlands

Technetix Ltd.	Class	Company Confidential	JJ/GBr	TESTED
	Title	FW Upgrade document for NCC-1222 V1.12	GBr	APPROVED
Page 1 of 18	Author	G. Bronkhorst	Date	03-09-2018

Contents

1	Introduction	3
2	System and software requirements	3
3	Installing NarrowCast Controller Bootloader Application V1.1	4
4	Discover the NCC-1222 IP address.....	6
5	Firmware Upgrade	7
5.1	Using the Bootloader Upgrade Software	7
5.2	Enter Bootloader section and upload (new) Application.....	9
6	GUI upgrade	13
6.1	Upload GUI BIN code for WebGUI	13
7	Factory Reset the NCC-1222 for optimal performance	16
7.1	Preparing to perform a Factory Reset NCC-1222	16
8	Firmware upgrade Finished.....	18

Technetix Ltd.	Class	Company Confidential	JJ/GBr	TESTED
	Title	FW Upgrade document for NCC-1222 V1.12	GBr	APPROVED
Page 2 of 18	Author	G. Bronkhorst	Date	03-09-2018

1 Introduction

This document contains information about how to upgrade the Application firmware or new Application firmware to a NCC-1222 NarrowCast Controller V1.12.

In this document we will guide you through the upgrade process, and explain in clear steps how to upgrade the NCC-1222 firmware platform.

2 System and software requirements

To upgrade the NCC-1222 system to version 1.12 you need at least the following:

Hardware:

Upgrade Target device:

- Operational NCC-1222, powered in MRO-100/BP rack or eq.
- Network connection to NCC-1222 (Locally connection preferred but network connection also possible)
- Network cable straight

Upgrade Source device:

- Windows XP, Vista SP2, Windows 7 SP1 or Windows 8 Operating system with 32-bit: x86 class processor or 64-bit*: x64 processor
- 32-bit systems: 1 GB minimum, 2 GB or more recommended; 64-bit systems*: 4 GB or more recommended

Software:

Installed on upgrade Target device:

- None

Installed on upgrade Source device:

- Microsoft .NET Framework 3.1 (version 4.5 preferred)
- Firefox Web browser (<http://www.mozilla.org>) or Internet Explorer 8.0 or greater.
- Technetix Ethernet Discovery System (*supplied with upgrade package*)
- NarrowCastController Bootloader Application V1.1 Installation package (*supplied with upgrade package*)
- Technetix MIB file for MIB Browser “**Technetix-GATEWAYS-MIB-SMI-V1-v1-8.mib**” (*supplied with upgrade package*)
- MIB Browser iReasoning, (<http://ireasoning.com/mibbrowser.shtml>) version 9.5 or eq

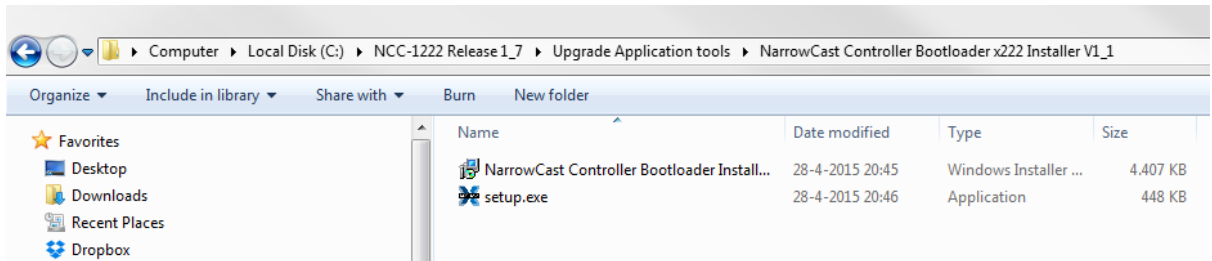
Firmware:

- FW version 1.11 “**HE100925 76 NCC-1222 Application V1_12 2018-09-03.ncc1**” (*supplied with this upgrade package*)
- Web GUI File for Web interface “**HE100925 76 NCC-1222 Web Version V1_12 Build 2018-09-03.bin**” (*supplied with this upgrade package*)

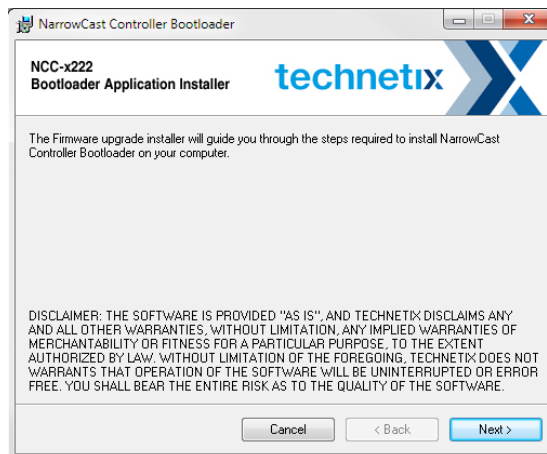
Technetix Ltd.	Class	Company Confidential	JJ/GBr	TESTED
	Title	FW Upgrade document for NCC-1222 V1.12	GBr	APPROVED
Page 3 of 18	Author	G. Bronkhorst	Date	03-09-2018

3 Installing NarrowCast Controller Bootloader Application V1.1

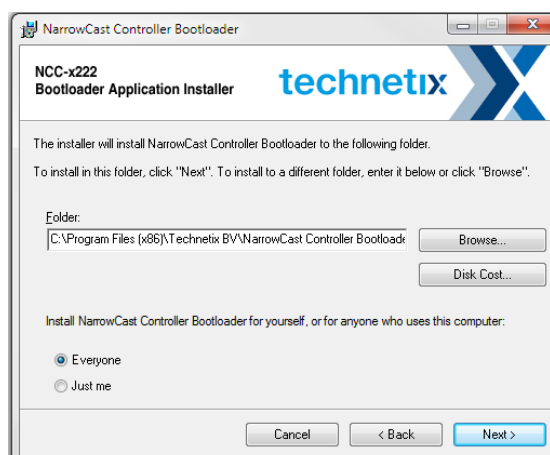
For upgrading the NCC-1222 Technetix has provided a special upgrade tool. This tool is able to update a NCC-1222 and a future NCC-2222 as well. You can find the tool in the Upgrade application tools -> NarrowCast Controller Bootloader x222 V1_1 directory.



Double click on the setup.exe and the installation wizard will guide you through the installation process.

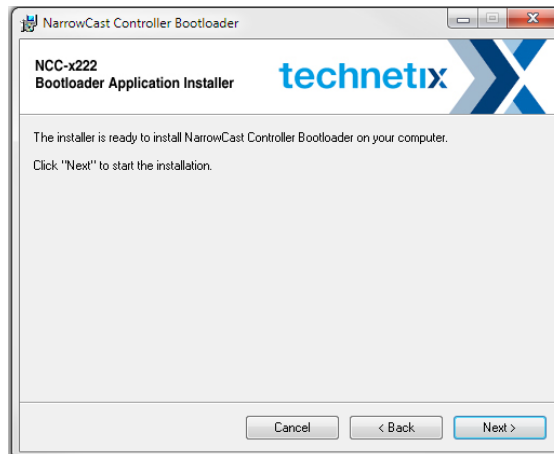


Press the **"Next"** button

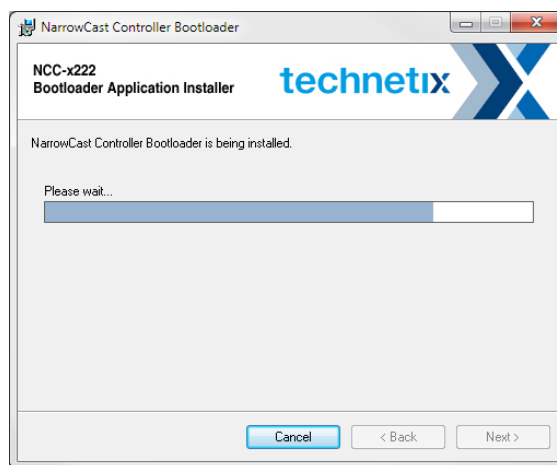


Press the **"Next"** button

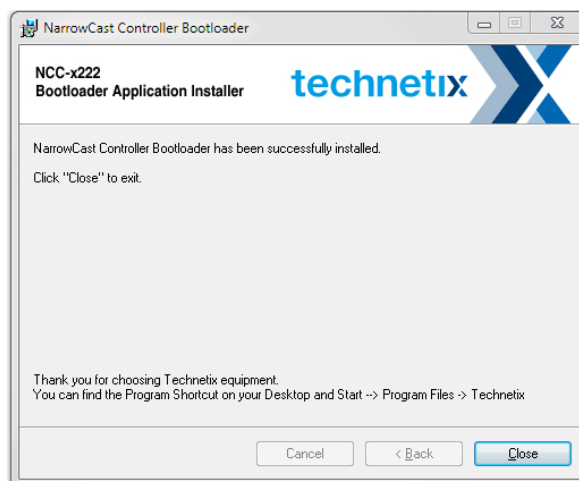
Technetix Ltd.	Class	Company Confidential	JJ/GBr	TESTED
	Title	FW Upgrade document for NCC-1222 V1.12	GBr	APPROVED
Page 4 of 18	Author	G. Bronkhorst	Date	03-09-2018



Press the **“Next”** button



Installation in progress...



Installation Complete. Press the **“Close”** button

Technetix Ltd.	Class	Company Confidential	JJ/GBr	TESTED
	Title	FW Upgrade document for NCC-1222 V1.12	GBr	APPROVED
Page 5 of 18	Author	G. Bronkhorst	Date	03-09-2018

After installation, a Program files startup icon is created, and you can find an icon on your desktop to startup the bootloader application.



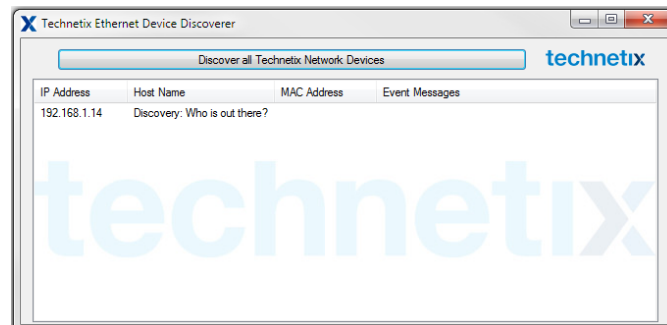
4 Discover the NCC-1222 IP address

Every NCC-1222 does have a unique MAC address, and this MAC address is connected to an IP address. Default, in static mode the default IP address of the NCC-1222 is **192.168.1.1**.

In most situations, a (big) network is used with DHCP configuration. In other situations, the NCC-1222 has a static IP address in a specific subnet. So the IP address can be totally different from the factory default IP address. This makes it difficult to detect the correct and active IP address of the NCC-1222. The IP Address is discoverable with a Technetix discovery tool, the “**Technetix Ethernet Discovery System**”.

The NCC-1222 is the first device in this new range of products, which presents the IP address, MAC address and even event messages of the NCC-1222 in one screen. When more than one NCC-1222 units are online the list will grow, but the essence of the tool will stay the same.

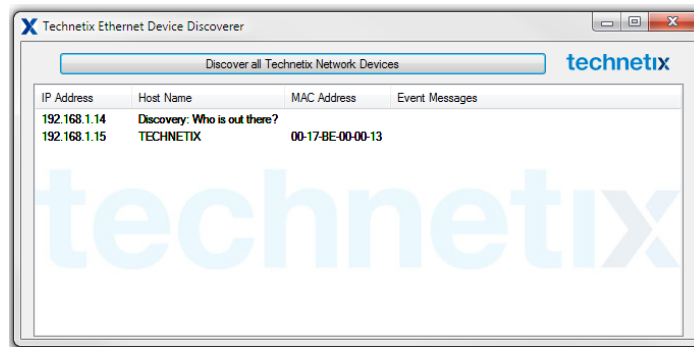
Default, all NCC-1222 will carry the Technetix host name, but when more than 1 device are installed in a network, we advise to give specific host names to each NCC-1222 to make them more clear to discover (human readable). The **Hostname** can carry **15 characters (NETBEUI based)**



To use the tool, you don't need to have your computer configured in the same sub network. The discovery tool can detect every device on the network, as long as a possible router is not blocking the discovery request by the host (your computer). When you want to communicate with the NCC-1222 to do the upgrade you need to be connected to the same subnet. This is a normal network rule you need to comply to.

When the NCC-1222 is online in Bootloader or application mode, it is discoverable automatically when the Technetix Ethernet Device Discoverer is starting up, or when the button “**Discover all Technetix Network Devices**” is pressed.

Technetix Ltd.	Class	Company Confidential	JJ/GBr	TESTED
	Title	FW Upgrade document for NCC-1222 V1.12	GBr	APPROVED
Page 6 of 18	Author	G. Bronkhorst	Date	03-09-2018



In this example, the NCC-1222 is locally connected to a Host computer (no DHCP, just static connection one-on-one). In the discovery screen the device is detected as IP 192.168.1.1 and the Hostname is "Default:" **TECHNETIX**. The MAC address is always unique and also given in the screen. The last box is normally empty, but when there's a DHCP event occurred, the DHCP message is given in this box, indicating what's happened to the NCC-1222 as an information message.

From this point, we discovered our NCC-1222 does have IP **192.168.1.15** so we can use this IP address to start the upgrading session.

5 Firmware Upgrade

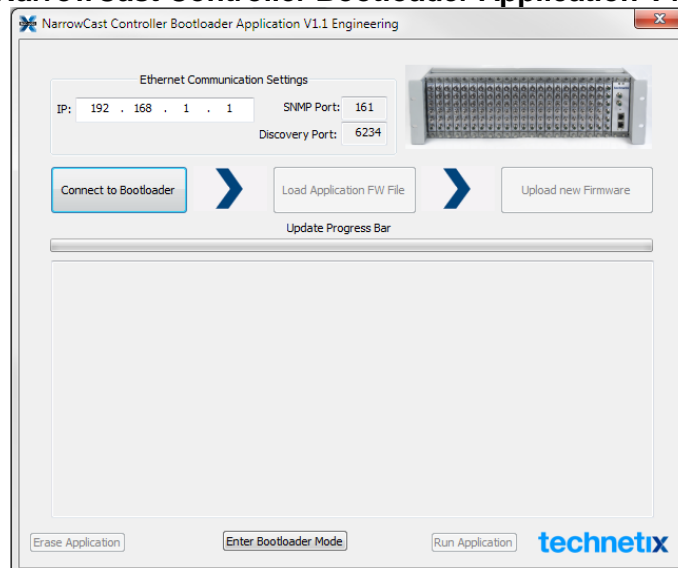
This chapter explains how to upgrade the NCC-1222 Firmware. This is the core code of the NCC-1222. The WebGUI is built on top of this firmware and need to start with V1.9.x to be compatible with this firmware release.

5.1 Using the Bootloader Upgrade Software

As described in the previous Chapter, to upgrade a NCC-1222 module, you need a special PC application to set the NCC-1222 in Bootloader mode. In this Bootloader mode the user is able to do a firmware upgrade their selves, without losing the amplifier settings or signal interruption during upgrade.

When you start up the NCC-x222 Bootloader application, the following screen appears:

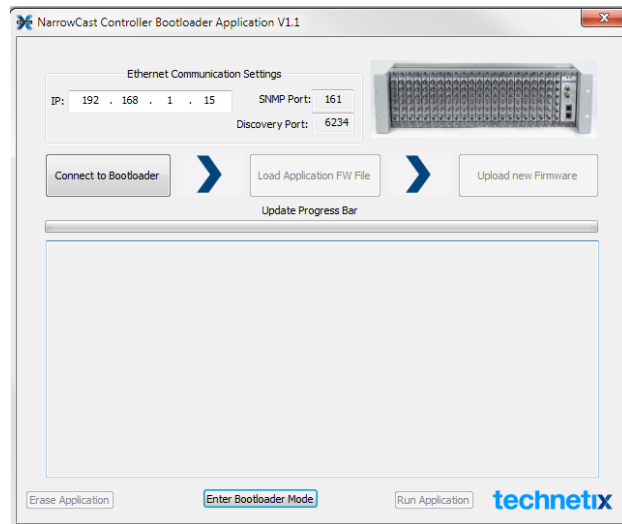
NarrowCast Controller Bootloader Application V1.1



Technetix Ltd.	Class	Company Confidential	JJ/GBr	TESTED
	Title	FW Upgrade document for NCC-1222 V1.12	GBr	APPROVED
Page 7 of 18	Author	G. Bronkhorst	Date	03-09-2018

The Bootloader application is an easy tool to upgrade a device. When the module is in NCC-1222 Application mode (normal operation) the Bootloader section is not accessible.

Since our NCC-1222 Narrowcast Controller to upgrade has IP **192.168.1.15** we need to change the IP to this specific IP address:



To enter the Bootloader you need to send a special **“Enter Bootloader Mode”** command to the NCC-1222 before you are able to reach the Bootloader section. This command is given by **pressing** the **“Enter Bootloader Mode”** in this application. The interacting with the Bootloader section is possible when the NCC-1222 is connected through an Ethernet Connection and when the correct IP address is given for the specific NCC-1222 to upgrade (use the Ethernet Discovery program to detect the IP address).

The specific NCC-1222 IP address (Ethernet Discovery program, Chapter 4)

After this command the device leaves the application section and enters the Bootloader section. The Bootloader session will be accessible for max. 180 seconds. When this time expires, the application section is entered again when there is valid application firmware available. When there is no valid firmware available the Bootloader session will stay active, even when the time of 180 seconds is expired. When upgrade is started, 180 seconds timer is reset to zero.

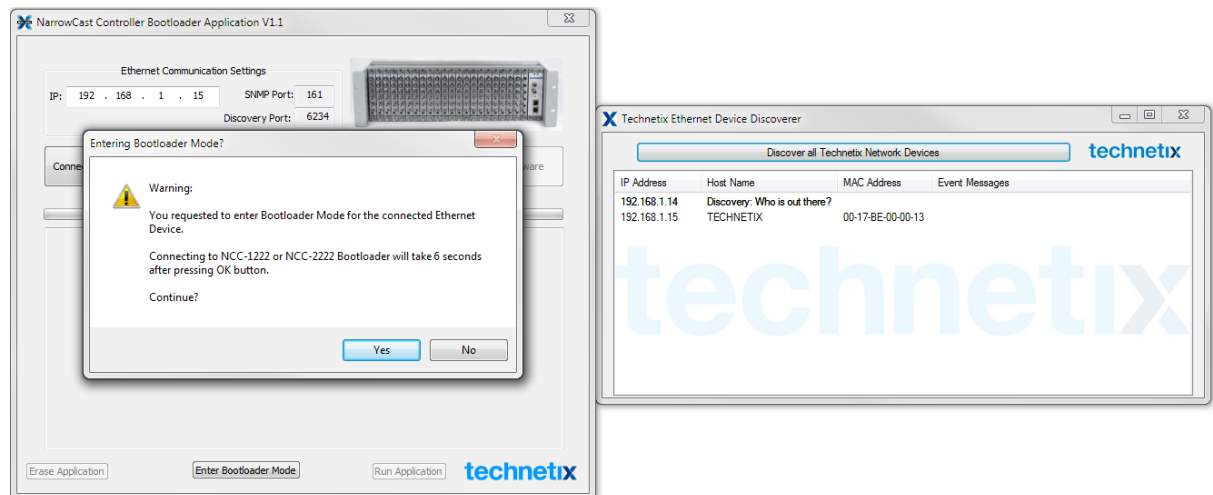
Technetix Ltd.	Class	Company Confidential	JJ/GBr	TESTED
	Title	FW Upgrade document for NCC-1222 V1.12	GBr	APPROVED
Page 8 of 18	Author	G. Bronkhorst	Date	03-09-2018

5.2 Enter Bootloader section and upload (new) Application

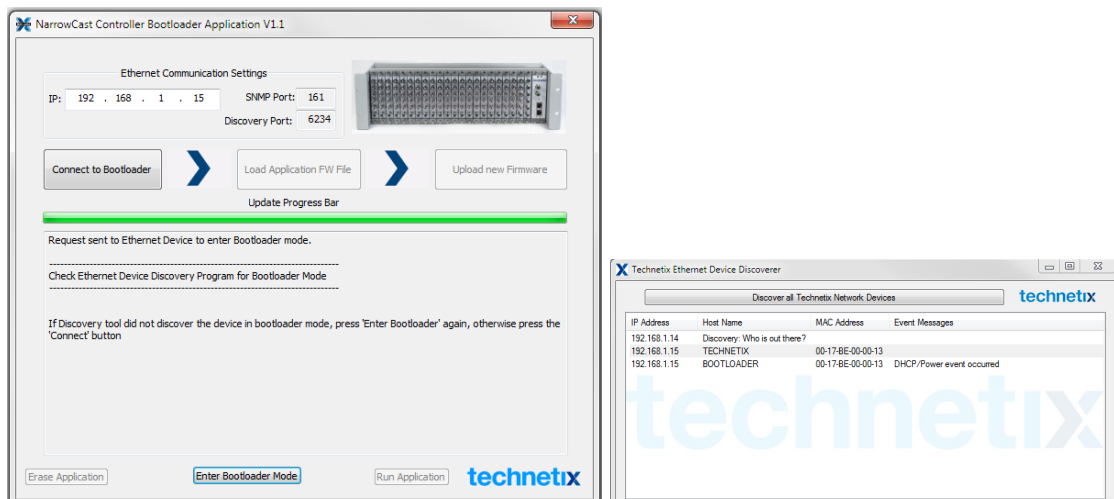
To enter the Bootloader mode, press the **“Enter Bootloader Mode”**. Be sure the NCC-1222 is connected through the Ethernet and Powered correctly.

After pressing the **“Enter Bootloader Mode”** button, the following screen appears.

This warning box informs you that it will take 6 seconds to activate the NCC-1222 bootloader section. To continue, press **“Yes”**, to abort entering the bootloader mode, press **“No”**.



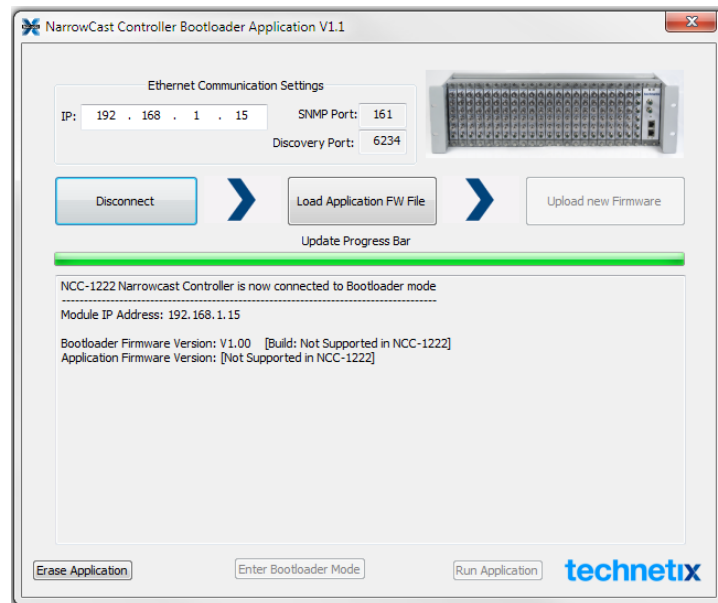
After pressing **“Yes”** the screen is frozen for 6 seconds, and then the following screen appears:



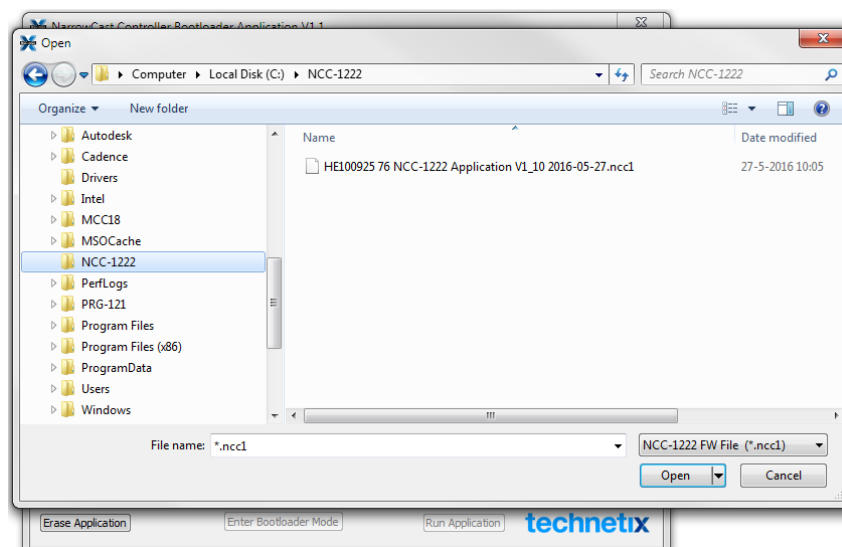
When the device is in Bootloader mode, and the **“Connect to Bootloader”** button is pressed, the device can communicate in the Bootloader mode.

Technetix Ltd.	Class	Company Confidential	JJ/GBr	TESTED
	Title	FW Upgrade document for NCC-1222 V1.12	GBr	APPROVED
Page 9 of 18	Author	G. Bronkhorst	Date	03-09-2018

*When you check now at the discovery program, it's telling you the Hostname is **BOOTLOADER** at the moment (Bootloader section) and there has been a **power cycle inside the microprocessor (Soft reset)**. The used IP address is based on the DHCP address or the static address as used in the application.*



Next, you need to load the .ncc1 file which contains the application data.





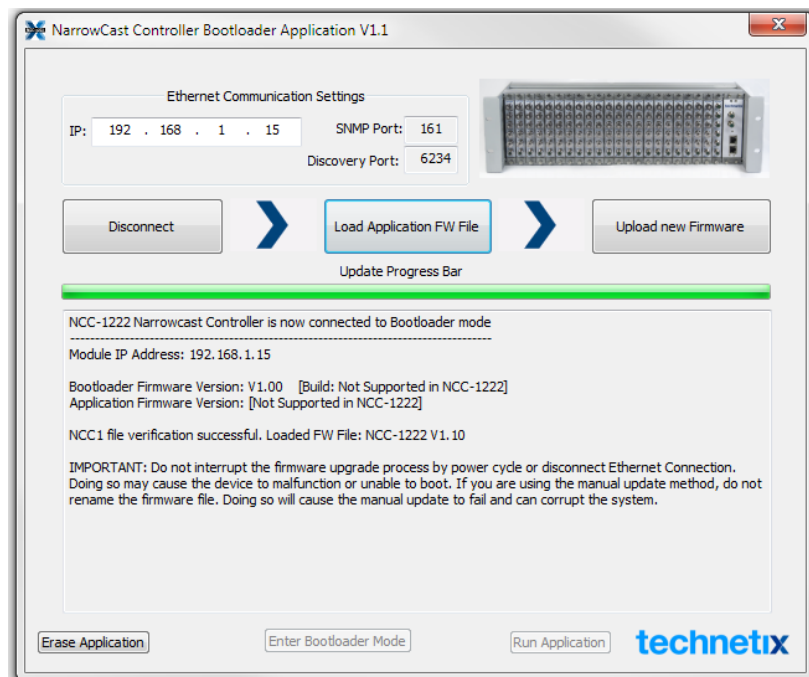
When the firmware is selected, **“Open”** the firmware.

The selected .ncc1 file contains Firmware Application FW Version V1.12 for NCC-1222

To upload the selected new firmware, press the **“Upload new Firmware”** button.

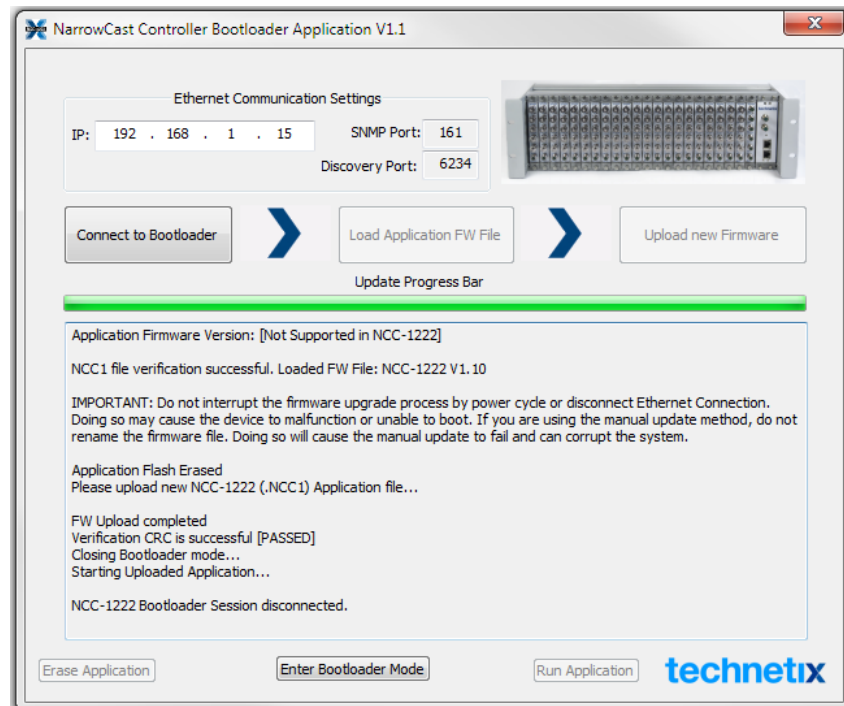
Technetix Ltd.	Class	Company Confidential	JJ/GBr	TESTED
	Title	FW Upgrade document for NCC-1222 V1.12	GBr	APPROVED
Page 10 of 18	Author	G. Bronkhorst	Date	03-09-2018

	<p><u>WARNING:</u></p> <p>WHEN THE UPDATE PROCESS WITH THE ERASE-PROGRAM-VERIFY PROCESS IS STARTED DON'T REBOOT YOUR COMPUTER OR CLOSE THE UPGRADE APPLICATION. UPDAT PROCESS WILL USUALLY TAKE 10-40 SECONDS</p>	
---	---	---



Firmware upgrade in Progress, wait approx. 25 seconds dependent of network connection speed.

Technetix Ltd.	Class	Company Confidential	JJ/GBr	TESTED
	Title	FW Upgrade document for NCC-1222 V1.12	GBr	APPROVED
Page 11 of 18	Author	G. Bronkhorst	Date	03-09-2018



After programming, when the firmware passes the CRC (Cycle Redundancy Check) Checksum, the NCC-1222 is starting up and leaving the Bootloader section.

Firmware upgrade complete

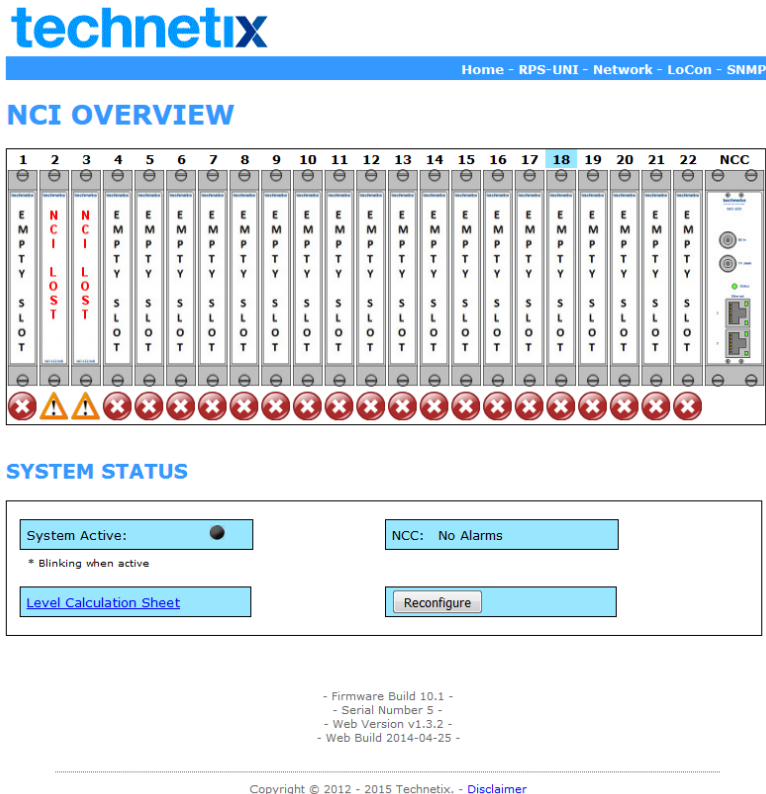
Technetix Ltd.	Class	Company Confidential	JJ/GBr	TESTED
	Title	FW Upgrade document for NCC-1222 V1.12	GBr	APPROVED
Page 12 of 18	Author	G. Bronkhorst	Date	03-09-2018

6 GUI upgrade

6.1 Upload GUI BIN code for WebGUI

We have now upgraded successfully the NCC-1222 core firmware, but on top of this firmware we also have WEB and SNMP support. Since the WEB interface is also updated, then we also need to upgrade the WEB support GUI to have total control of the NCC-1222

To upgrade the WEB section, we use a **container** file, **.BIN**. This file contains all information for the WEB support and SNMP support.



Home - RPS-UNI - Network - LoCon - SNMP

NCI OVERVIEW

1	2	3	4	5	6	7	8	9	10	11	12	13	14	15	16	17	18	19	20	21	22	NCC
EMPT Y	NCI LOST	NCI LOST	EMPT Y	EMPT Y	EMPT Y	EMPT Y	EMPT Y	EMPT Y	EMPT Y	EMPT Y	EMPT Y	EMPT Y	EMPT Y	EMPT Y	EMPT Y	EMPT Y	EMPT Y	EMPT Y	EMPT Y	EMPT Y	EMPT Y	EMPT Y
SLOT	SLOT	SLOT	SLOT	SLOT	SLOT	SLOT	SLOT	SLOT	SLOT	SLOT	SLOT	SLOT	SLOT	SLOT	SLOT	SLOT	SLOT	SLOT	SLOT	SLOT	SLOT	SLOT

SYSTEM STATUS

System Active: ☒ NCC: No Alarms

* Blinking when active

[Level Calculation Sheet](#) [Reconfigure](#)

- Firmware Build 10.1 -
 - Serial Number 5 -
 - Web Version v1.3.2 -
 - Web Build 2014-04-25 -

Copyright © 2012 - 2015 Technetix. - [Disclaimer](#)

On the Website you can see the **Firmware Build** in the previous chapters updated to **version 1.12**, but the Web version and Web build is still **2014-04-25** and **v1.3.2**. This is not the latest version, since the **Web version also needs to start with Version 1.12** to be fully compliant with this firmware release.

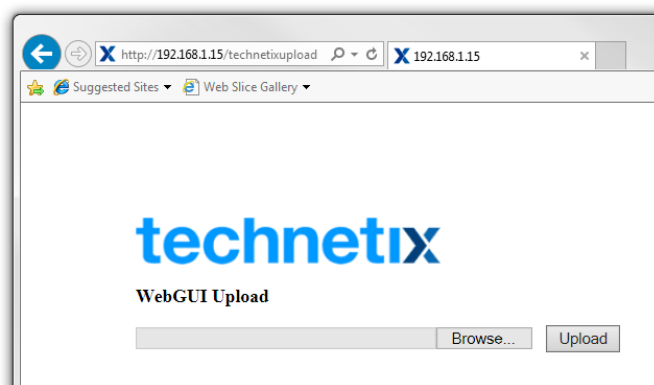
Technetix Ltd.	Class	Company Confidential	JJ/GBr	TESTED
	Title	FW Upgrade document for NCC-1222 V1.12	GBr	APPROVED
Page 13 of 18	Author	G. Bronkhorst	Date	03-09-2018

To upgrade the Web/SNMP GUI you need to access the following webpage:

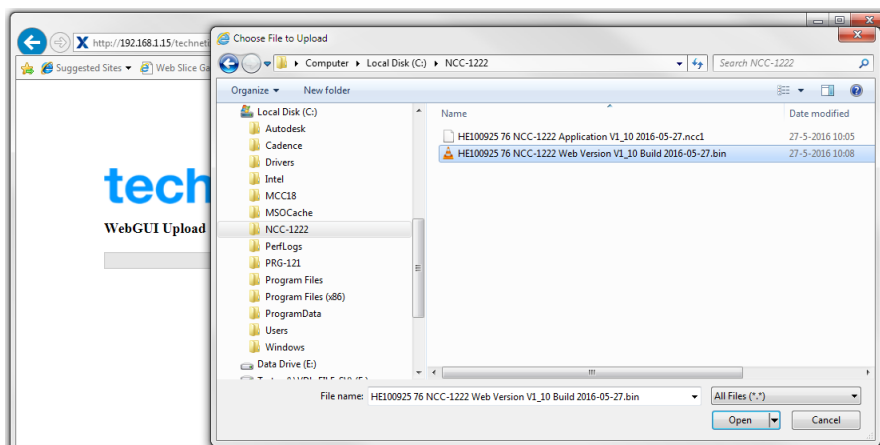
http://<NCC_IP_ADDRESS>/technetixupload

In our example we use:

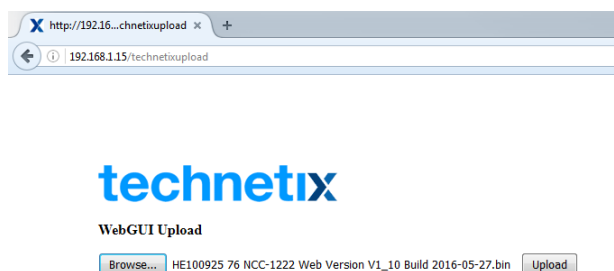
<http://192.168.1.15/technetixupload>



Now press the “**Browse**” button to select the BIN file on your hard drive. In our example we use the **C:\NCC-1222** directory. Select the BIN file from this page.

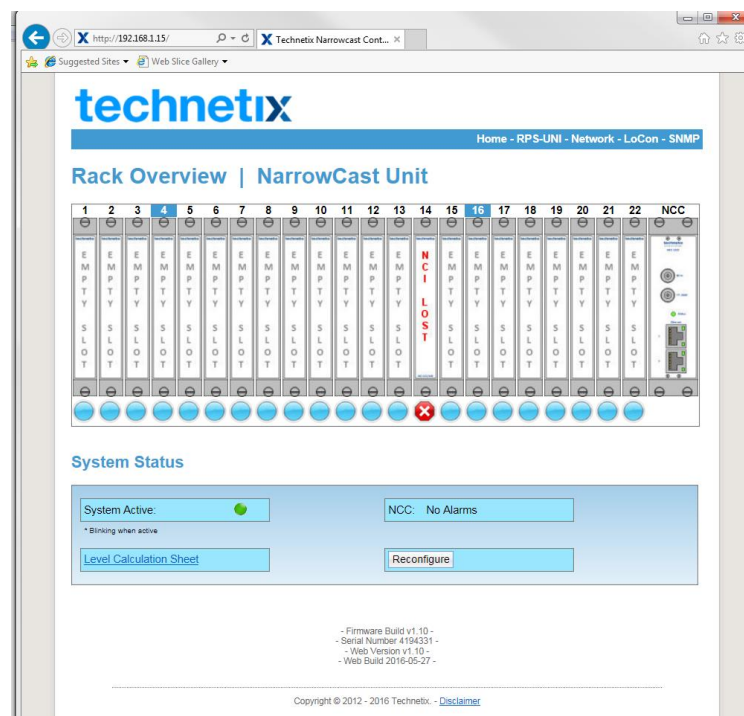
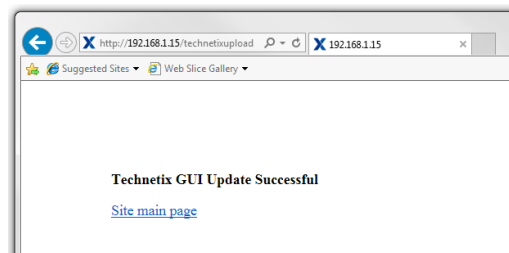


Now click the “**Upload**” button to upload the file to the GUI.



Technetix Ltd.	Class	Company Confidential	JJ/GBr	TESTED
	Title	FW Upgrade document for NCC-1222 V1.12	GBr	APPROVED
Page 14 of 18	Author	G. Bronkhorst	Date	03-09-2018

When the GUI is correctly uploaded the screen as given above will indicate **the upgrade of the GUI is successful** and you can continue by click on the text **“Site main page”** to return to the main page.



As the Homepage is on your screen again, you can see the Web Version is now also updated. The **Web version is now v.1.12** indicating the website is written for **Firmware version 1.12** The Web build date is now **2018-09-03**.

Everything is up and running now, but since new features are introduced, it's better to perform a factory reset of the NCC-1222 if possible

Technetix Ltd.	Class	Company Confidential	JJ/GBr	TESTED
	Title	FW Upgrade document for NCC-1222 V1.12	GBr	APPROVED
Page 15 of 18	Author	G. Bronkhorst	Date	03-09-2018

7 Factory Reset the NCC-1222 for optimal performance

For the optimal use of the new firmware upgrade, we always advise to do a factory reset after the firmware upgrade. This to prevent having incorrect or unsupported values for functions in memory which can cause strange errors.

Technetix always tries to prevent the direct need for a “factory default”, so normally it is not necessary to proceed this action.

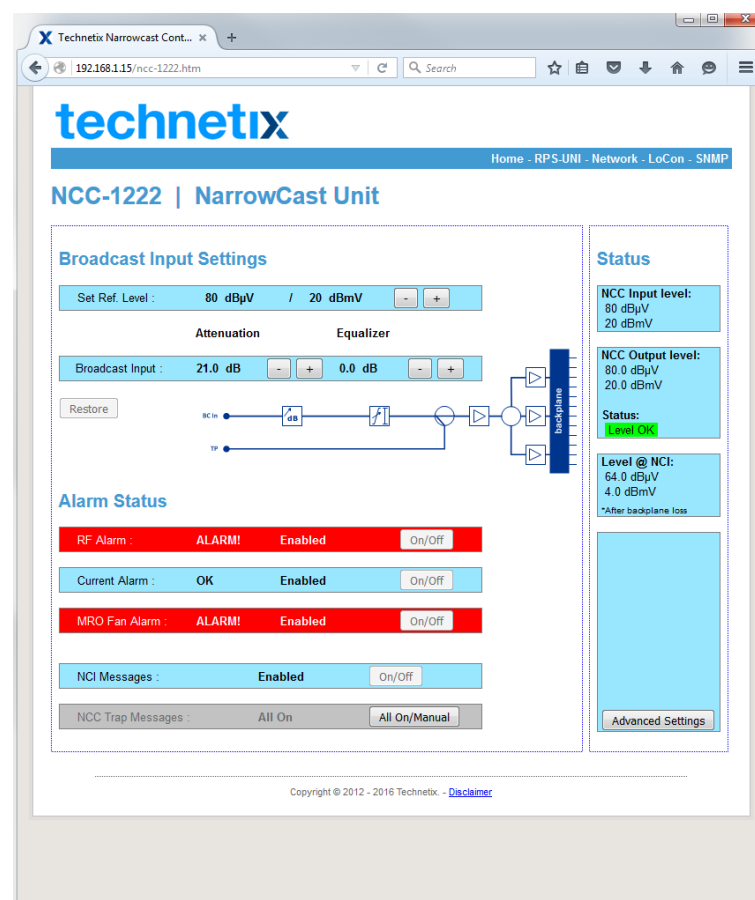
When a factory default is given, the NCC-1222 will be set to all factory defaults settings for all functional settings **including the RF settings**.

CAUTION:
If the decision is made to switch back to factory default
we advise to do this during night time or in a not live
condition to prevent RF problems

7.1 Preparing to perform a Factory Reset NCC-1222

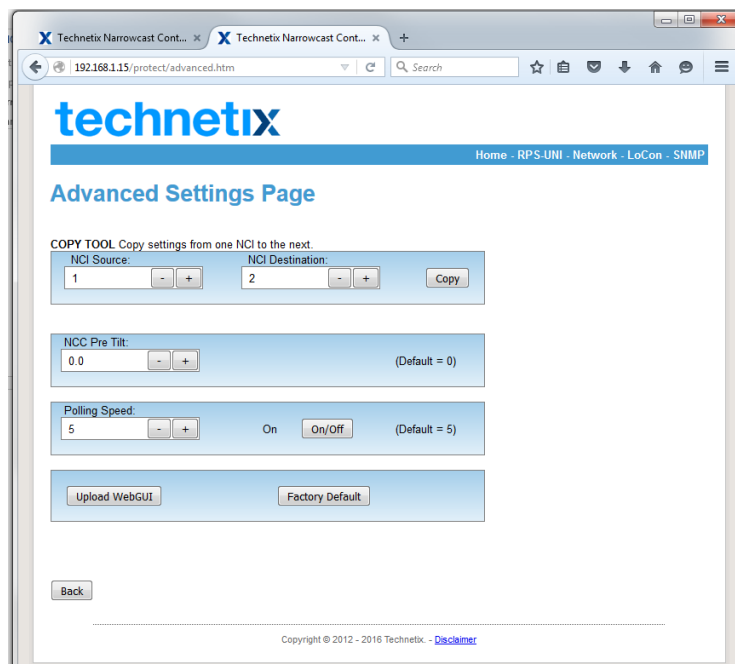
To Enter Factory default, you can use the Web GUI.

On the home page, click on the NCC picture of the NCI Rack. This will open the following screen:

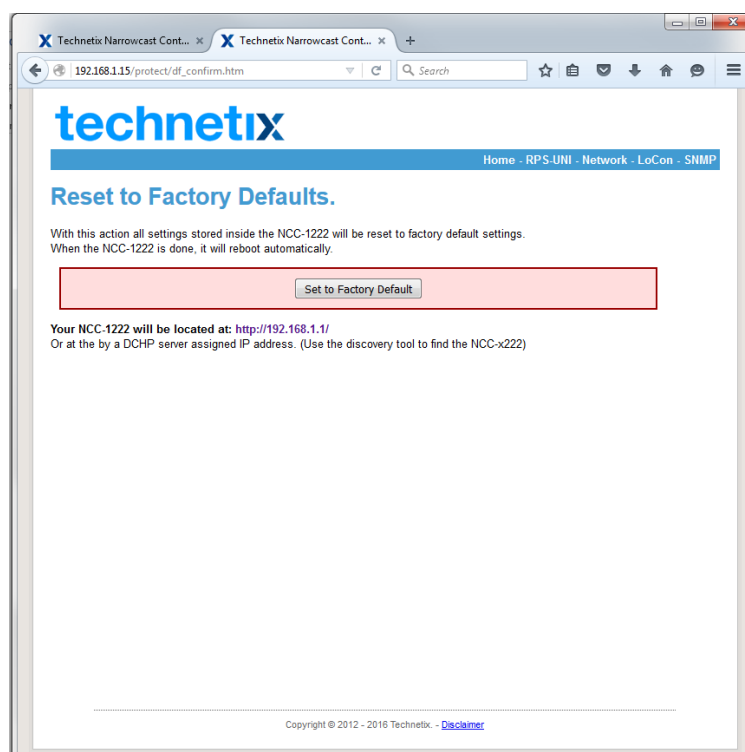


Technetix Ltd.	Class	Company Confidential	JJ/GBr	TESTED
	Title	FW Upgrade document for NCC-1222 V1.12	GBr	APPROVED
Page 16 of 18	Author	G. Bronkhorst	Date	03-09-2018

Now press the “Advanced Settings” button on the bottom of the screen to enter the advanced config page.



Now press the “Factory Default” button to set the NCC-1222 to factory default.



If you are sure to set all settings to Factory Default, press the “Set to Factory Default” button to activate this selection.

Technetix Ltd.	Class	Company Confidential	JJ/GBr	TESTED
	Title	FW Upgrade document for NCC-1222 V1.12	GBr	APPROVED
Page 17 of 18	Author	G. Bronkhorst	Date	03-09-2018

8 Firmware upgrade Finished

When you followed all described steps in the previous chapters, your NCC-1222 is correctly upgraded to the latest version of the NCC-1222.

Please read the release document to see all the changes and bug fixes and new features for this release (Version 1.12) "**NCC-1222 FW Upgrade Document V1_12.pdf**"

-= END OF DOCUMENT =-

Technetix Ltd.	Class	Company Confidential	JJ/GBr	TESTED
	Title	FW Upgrade document for NCC-1222 V1.12	GBr	APPROVED
Page 18 of 18	Author	G. Bronkhorst	Date	03-09-2018